



Update for the Rail Electrification Council

Mariah Morales

19 November 2020

Amtrak's National Network & Northeast Corridor

2



*Electrification currently confined to the **Northeast Corridor** and one State-Supported corridor (**Harrisburg to Philadelphia**).*

FY19 SUSTAINABILITY PROGRESS

These four strategic sustainability goals focus our workforce on resources we consume and impacts we make while we operate Amtrak. We strive to do better and from the numbers below, we're on our way.



ELECTRICITY USE



In FY19 **we decreased energy use by 4.4% at our 40 largest facilities** – well above our -1% goal.



DIESEL FUEL USE



In FY19 **we surpassed our goal of -1% and achieved a total 2.8% reduction** in purchased revenue diesel fuel over FY18.



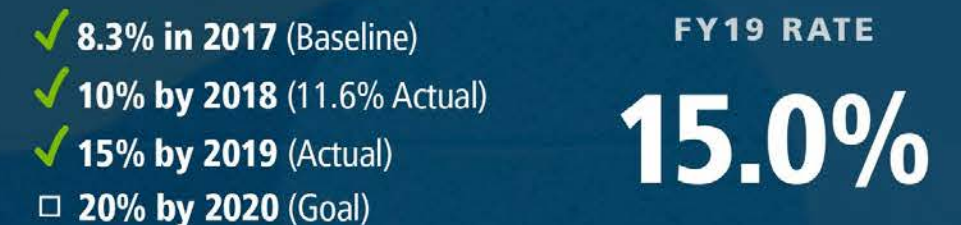
GHG EMISSIONS



Surpassing our goal of -1%, **greenhouse gas emissions (GHG) were down nearly 4%** in FY19 compared to FY18.



RECYCLING RATE



We met our FY19 goal of **diverting 15% of our trash away from landfills**, a step toward our goal of 20% by 2020.

Types of Electrification

South End Electrification

12 kV at 25 Hz:

Washington to New York

12.5 kV at 60 Hz:

New York to New Rochelle

New Rochelle to New Haven

North End Electrification

25 kV at 60 Hz:

New Haven to MA state line

MA state line to Boston

Non-NEC Segments

Electrified:

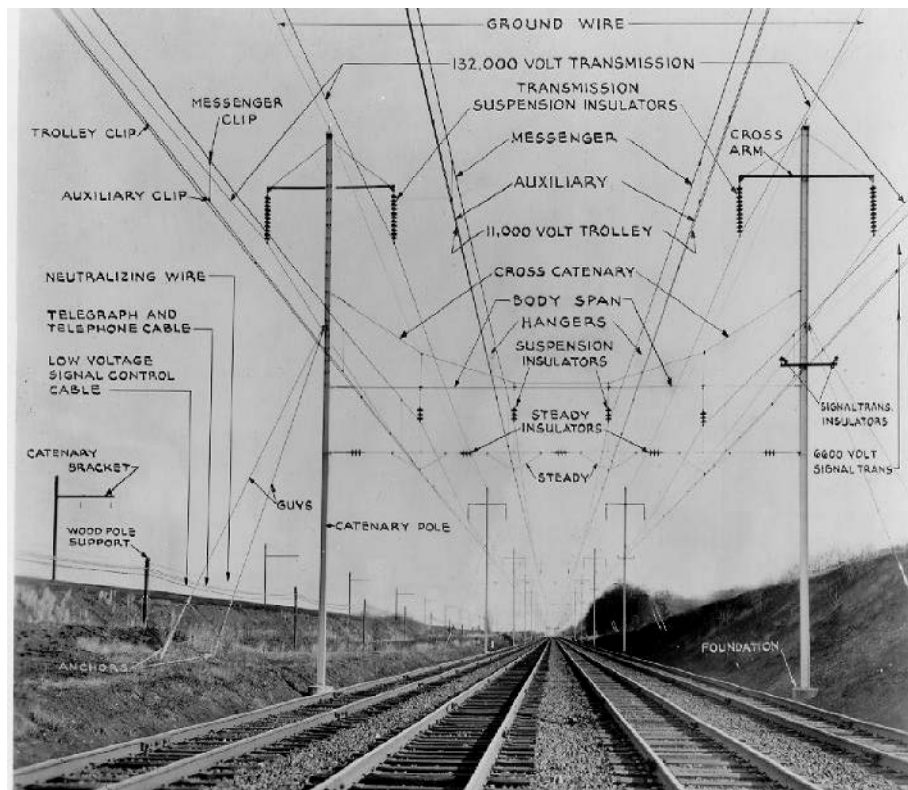
(12 kV at 25 Hz)

Harrisburg to Philadelphia

(i.e., route of *Keystones* in PA)

All remaining non-NEC segments:

Unelectrified



(Picture depicts 12 kV at 25 Hz infrastructure.)



Segments in blue are Amtrak-owned. Segments in red are not.

Selected Procurements and Investments

New and Improved Equipment

- Completion of Viewliner II procurement
- New Midwest cars arrive early in CY 21 (Siemens Venture married pairs)
- First new *Acela* equipment arrives later in CY 21 (Avelia Liberty trainsets)
- New ALC-42 diesel locomotives begin arriving in CY 21
- Amfleet replacements (dual-mode?) begin entering service circa 2025

Major Stations Upgrades

- Moynihan Train Hall in New York City opens this winter
- Washington Union Station concourse modernization planned
- Other improvements at NYP and WAS, plus BAL, CHI, & PHL

Next-Generation High-Speed Rail Investments on the NEC

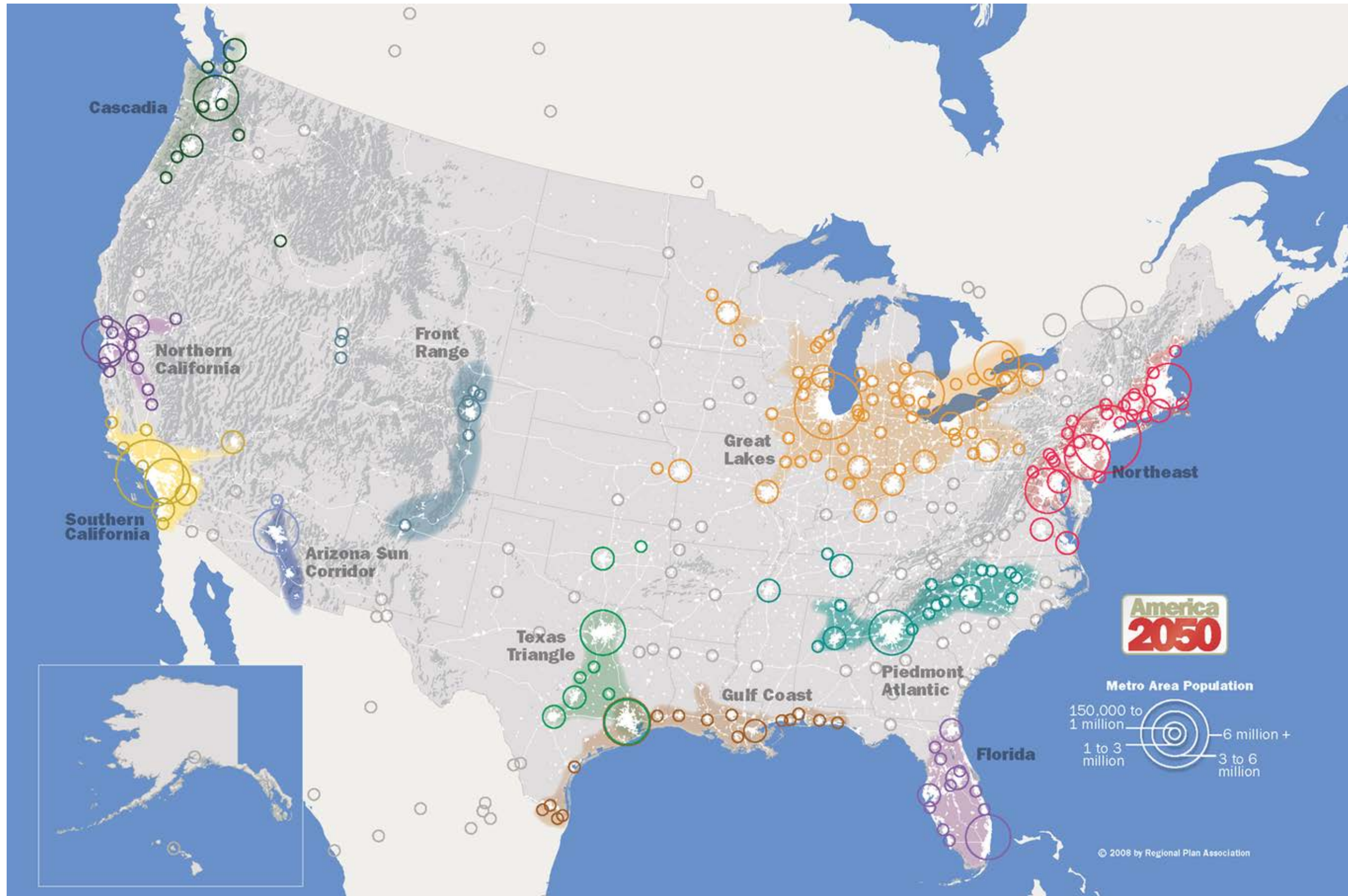
- Track upgrades and capacity improvements, inc. to allow higher-speed travel

Post-COVID Economic Recovery

- \$5.2 billion economic recovery proposal to Congress



Megaregions: Ideal for Corridor Service





See you on the train!